

NOLI TIMERE

Director and Choreographer **Rebecca Lazier**
Visual Artist **Janet Echelman** and **Studio Echelman**

Noli Timere is a soaring aerial performance and installation, performed within, on, under, around - and created simultaneously with - a voluminous Janet Echelman net sculpture. Featuring 6-8 outstanding multidisciplinary performers, the work is a fusion of contemporary dance and avant-garde circus; art installation and advanced engineering; public sculpture and social practice to explore how we navigate an unstable world.

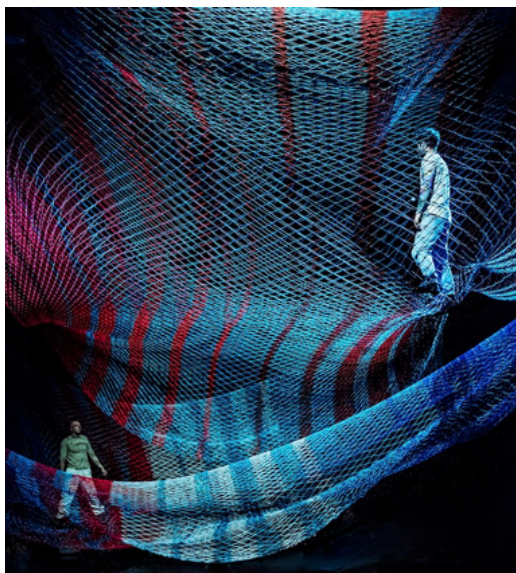
Marking the first time performers will move upon and within an Echelman suspended sculpture, this collaboration presents the artists up to 25 feet in the air, in which choreography and sculpture are continually transformed by one another.

Noli Timere, meaning 'be not afraid' in Latin, uniquely renders interconnectedness visible and tangible, demonstrating how a change in one element has cascading effects and proposing an innovative response to global challenges including the climate crisis.

NOLI TIMERE is designed and created to be presented either indoors or outdoors.

The 60-minute work will be ready for presentation **SUMMER 2024**

TRAILER: <https://vimeo.com/868886279>



CREATIVE TEAM

Director and Choreographer: Rebecca Lazier

Sculpture Designer: Janet Echelman and Studio Echelman

Lighting Design: Leigh Ann Vardy

Costume Design: Marilène Bastien

Rigging: James Leonard, Dominique Clement, Jackie Deniz Young

Music: Caleb Burhans, Oliver Coates, Johann Johansson, Qasim

Naqvi, DJ Spooky, and Pamela Z

Producer | Tour Representation: Gregg Parks, Y2D Productions



REBECCA LAZIER

www.rebeccalazier.com

Rebecca Lazier - an award-winning choreographer and educator based in New York and Nova Scotia, has choreographed more than eighty works. Recognized as an audacious experimenter, Rebecca creates works of explosive vitality inspired by the thinking and innovation that is possible through collaboration. Her "There Might Be Others", was commissioned by New York Live Arts and won a New York Performance "Bessie" Award. Lazier is a Professor of Practice at Princeton University.



JANET ECHELMAN

www.echelman.com

Janet Echelman - a renowned American sculpture, reshapes urban airspace with vast, moving sculptures that react to the environmental forces around them. Echelman combines ancient craft with state-of-the-art technology to create artworks that have become focal points for urban life on five continents and in North America. Echelman's TED talk, "Taking Imagination Seriously", has been translated into 35 languages and received more than two million views.



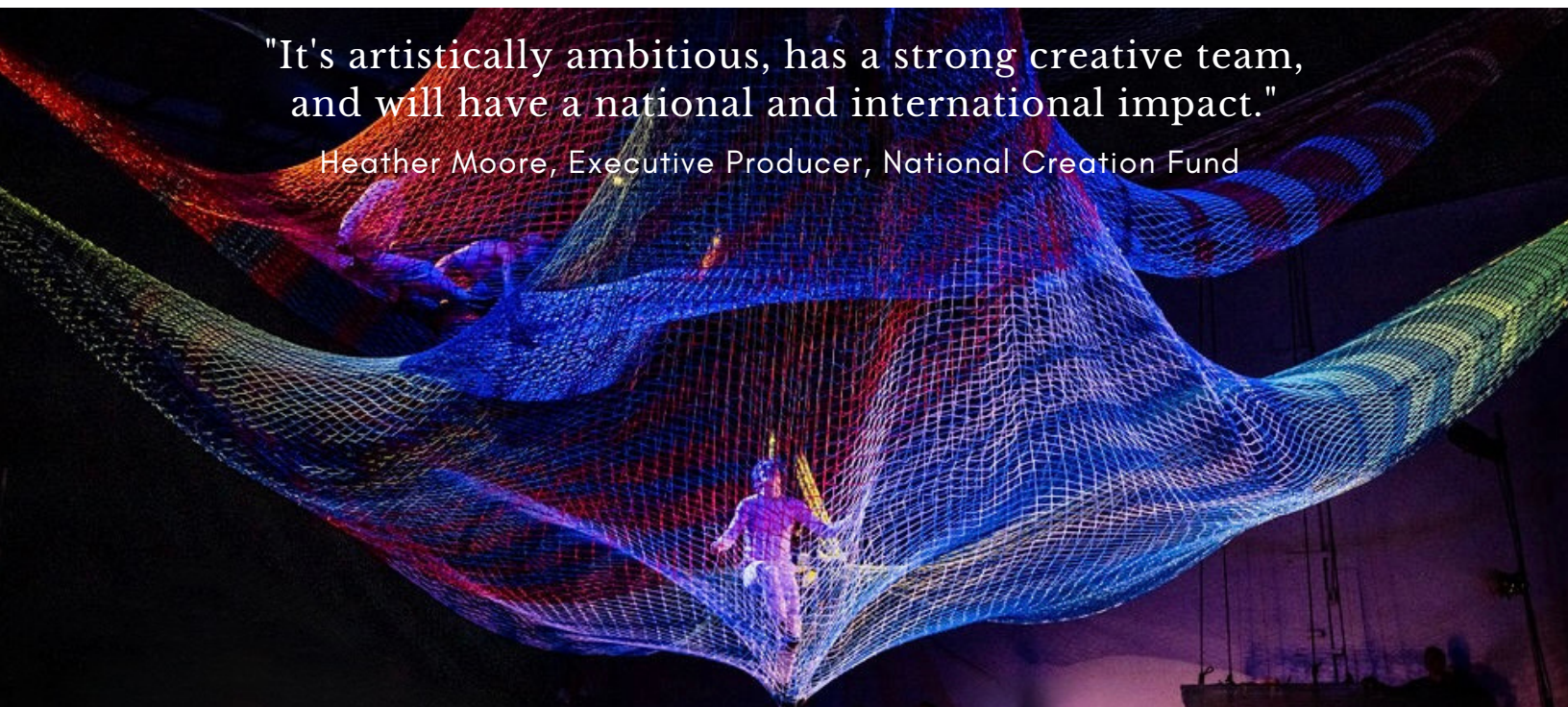
DEVELOPMENT

Canada's National Arts Centre's National Creation Fund, Canada Council for The Arts, Princeton University

Commissioning Support: Live Art Dance (Halifax), Princeton University, Mocean Dance (Halifax)

"It's artistically ambitious, has a strong creative team,
and will have a national and international impact."

Heather Moore, Executive Producer, National Creation Fund





We are committed to a collaborative, pragmatic working relationship with each presenter to ensure a bespoke set-up for each venue. We employ a technical director and rigger to develop rigging plans for each location, inclusive of site-visit, drawings, load-in planning, and execution.

TECHNICAL REQUIREMENTS

Theatrical Environment:

- Stage: 50 ft wide x 40 ft deep and a minimum height clearance of 22 feet.
- The performance can be adapted for frontal view, fully in the round, or a combination. Ideally, audiences have room to move during the performance to change point of view.
- Rigging: The sculpture suspends from 8 corner rigging points, which can be rigged to ceiling beams or from a truss (12" box-truss structure that is 40 ft wide by 35 ft deep). Rig should be assembled prior to company arrival.
- Lighting and Sound: Company will utilize lights within standard repertory plots of mid-sized theatres.

Technical Support:

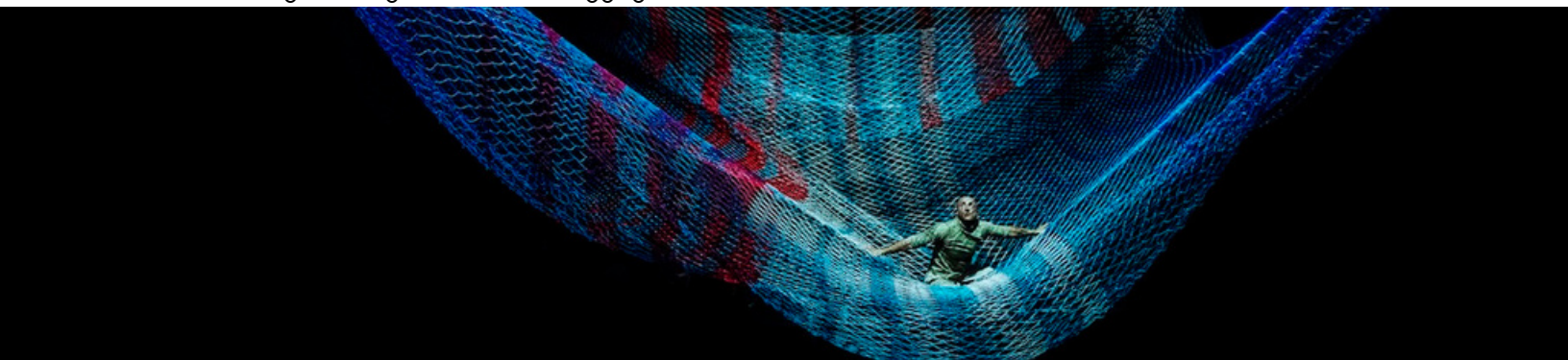
- Crew: Production Coordinator from presenter, Technical Director from venue, 6-8 polyvalent technicians (depending on venue and local regulations).

Company Provides:

- Rigging: Evaluation and drawings to create custom plans.
- Technical Direction: Production evaluation and schedule to create custom plan, inclusive of rental equipment.
- Lighting: Lighting plot with advance distribution plan for repertory instruments.
- Sound: Sound design with advance distribution plan for repertory instruments.

Traveling Team:

- Cast and Crew: 6-8 Artists, Artistic Director/Choreographer, Rigger, Lighting/Sound Director, Production/Tour Manager, optional Visual Artist/Janet Echelman
- 5 cases, traveling via freight or checked luggage.



NOLI TIMERE

A man is sitting on a large, illuminated net structure that resembles a giant fishing net. The net is lit with blue and purple lights, creating a shimmering, textured effect. The man is shirtless and wearing dark pants, looking upwards. The background is dark, making the illuminated net stand out.

AVAILABLE TO COME TO A THEATRE, PARK, OR FESTIVAL NEAR YOU...
SUMMER OF 2024

CONTACT: Gregg Parks 514-830-8525 | gregg@y2d-shows.com
<https://rebeccalazier.com/nolitimere>